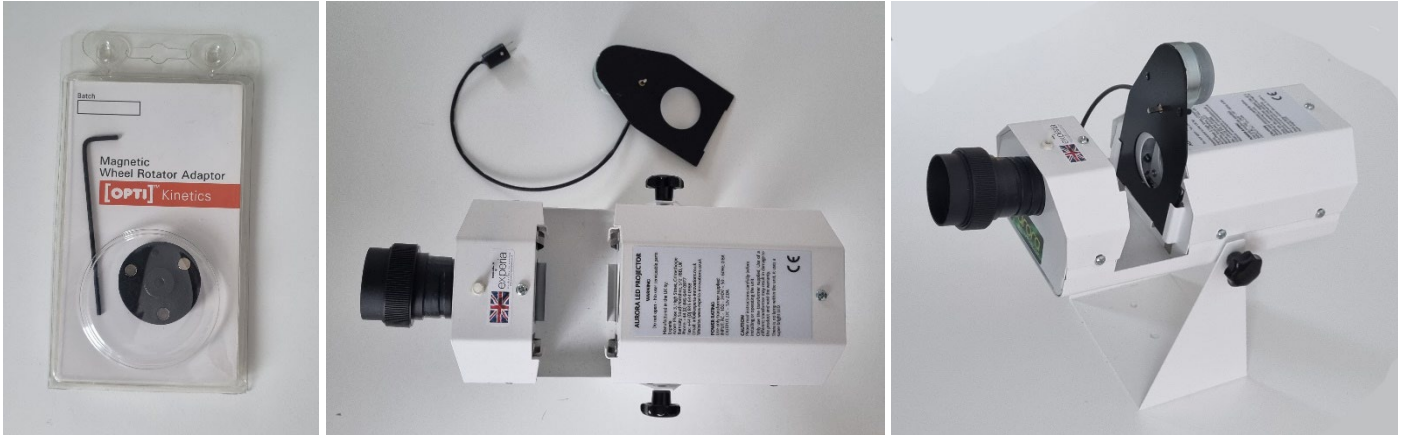


# AURORA PROJECTOR

Delivered with a shaft connector and a magnetic connector included in the package.

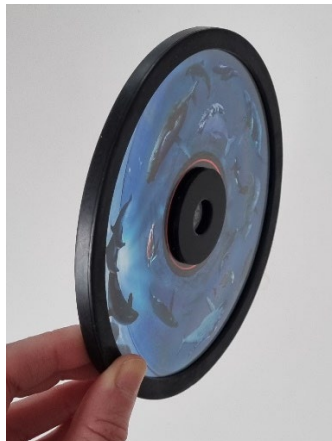


Slide the rotator in the gate towards the back of the unit with the shaft towards the front, connect the plug to the socket underneath.

If the Effect Wheel looks like this, place it on the slot, it is ready for use !



If the Effect Wheel looks like this, you need to add the magnet connector:



Simply place the magnetic connector on the slot and fasten it with the help from the hex key.



You can simply adjust the focus by turning the lens, if it wobbles, loosen or tighten the plastic screw on top of the projector.